

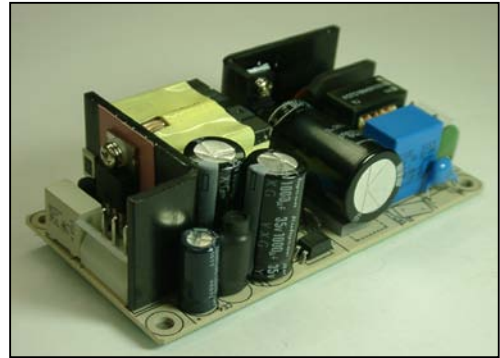
# UMEC International Corporation

## UP0601C SERIES

### 26-65 Watt AC/DC Open Frame

- ◆ Universal Input 90 to 264 VAC
- ◆ EMI Meets FCC/CISPR 22 Class B
- ◆ Continuous Short Circuit Protection
- ◆ MTBF 300Khrs
- ◆ UL/cUL, TUV, and CE approval
- ◆ RoHS Compliant

Green Product  
**RoHS**



### SPECIFICATIONS

All specifications are typical at nominal line, full load and 25°C unless otherwise noted.

### INPUT SPECIFICATIONS

Input Voltage Range ..... 90-264VAC  
Input Frequency ..... 47-63 Hz  
Inrush Current ..... 80A max. @230VAC(Cold Start)  
40A max. @110VAC(Cold Start)

### GENERAL SPECIFICATIONS

Hold-up Time ..... 10mS typ.  
Leakage Current ..... 3mA max.  
Short Circuit Protection ..... Continuous  
Continuous Output Power ..... 26~60W max.  
Hi-pot Isolation: Input / Output ..... 4242 VDC

### ENVIRONMENTAL SPECIFICATIONS

Operating Temperature Range ..... 0°C to 70°C  
Derating 50°C to 70°C ..... 2%/°C  
Temperature Coefficient ..... ±0.02%/°C  
Storage Temperature Range ..... -40°C to +85°C  
Humidity, Non-Condensing ..... 0 to 95% RH  
Cooling ..... Free- Air Convection  
EMI ..... Meets FCC/CISPR 22 Class B Specification



# UMEC International Corporation

## OUTPUT SPECIFICATIONS

| Model Number | Output Voltage (Volts) | OVP <sup>3</sup> | Output Current (Amps) |       | Max Power (Watt) | Efficiency (typ.) | Ripple <sup>1</sup> P-P (mV) | Total Regulation <sup>2</sup> |
|--------------|------------------------|------------------|-----------------------|-------|------------------|-------------------|------------------------------|-------------------------------|
|              |                        |                  | Min.                  | Rated |                  |                   |                              |                               |
| UP0601C-03   | 3.3                    | ✓                | 0                     | 8     | 26.4             | 72%               | 50                           | ±4%                           |
| UP0601C-05   | 5                      | ✓                | 0                     | 8     | 40               | 76%               | 50                           | ±4%                           |
| UP0601C-09   | 9                      | ✓                | 0                     | 6     | 54               | 80%               | 90                           | ±4%                           |
| UP0601C-12   | 12                     | ✓                | 0                     | 5.4   | 65               | 82%               | 120                          | ±4%                           |
| UP0601C-15   | 15                     | ✓                | 0                     | 4.3   | 65               | 82%               | 150                          | ±4%                           |
| UP0601C-18   | 18                     | ✓                | 0                     | 3.6   | 65               | 82%               | 180                          | ±4%                           |
| UP0601C-24   | 24                     | ✓                | 0                     | 2.7   | 65               | 84%               | 240                          | ±4%                           |
| UP0601C-29   | 29                     | ✓                | 0                     | 2.2   | 65               | 84%               | 290                          | ±4%                           |
| UP0601C-48   | 48                     | ✓                | 0                     | 1.35  | 65               | 84%               | 480                          | ±4%                           |

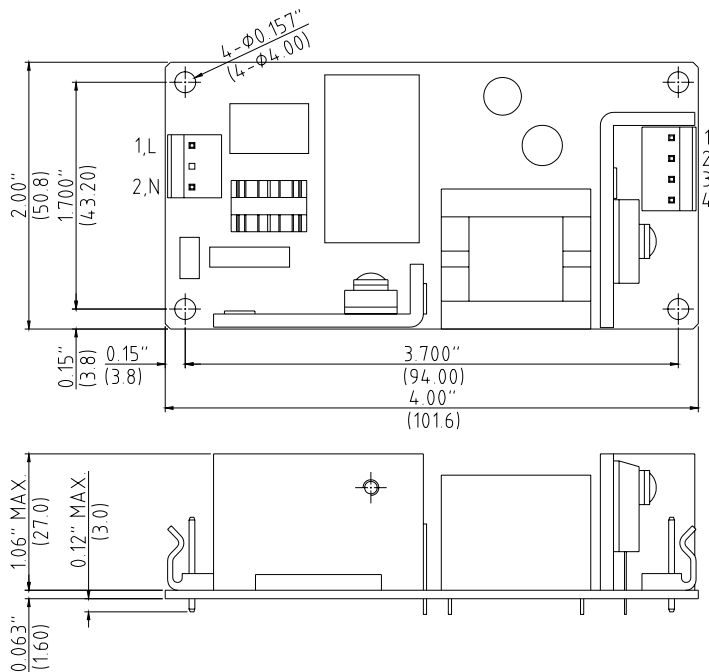
### NOTES:

1. Add a 0.1uF ceramic capacitor and a 10uF E.L. capacitor to the output connector. Peak to peak and RMS metering equipment shall have a 20 MHz response with probes and cables maintaining frequency response from 200 Hz to 100MHz bandwidth. Output ripple and spikes are measured directly at the output terminals of the power supply without the use of the probe ground clip.
2. Total regulation is defined as the static output regulation at 25°C, including initial tolerance, line voltage and load current within stated limits.
3. When the OVP occurred in model UP0601C-XX series, the power supply will be shutdown & auto-recovery except UP0601C-48 which will be shutdown & latched (The OVP is reset by removing the input power for 10 minutes.)

## PHYSICAL SPECIFICATIONS

Weight: 150g

UP0601C-XX



| CN1 input connector Molex 09-65-2038 with second pin removed |               |
|--|---------------|
| Pin  | Input voltage |
| L&N  | 90-264 VAC    |

| CN2 output connector Molex 09-65-2048 4Pin or equivalent |            |
|--|------------|
| Model  |            |
| Pin  | UP0601C-XX |
| 1  | Vo         |
| 2  | Vo         |
| 3  | Common     |
| 4  | Common     |

### NOTES:

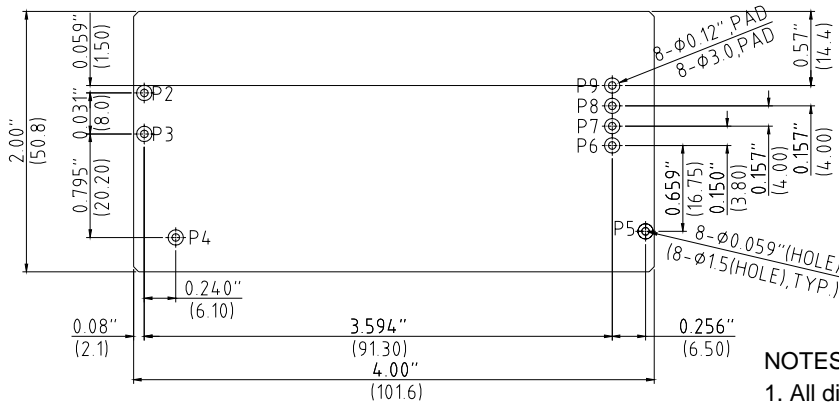
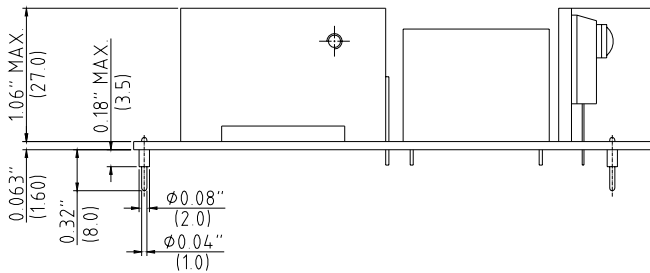
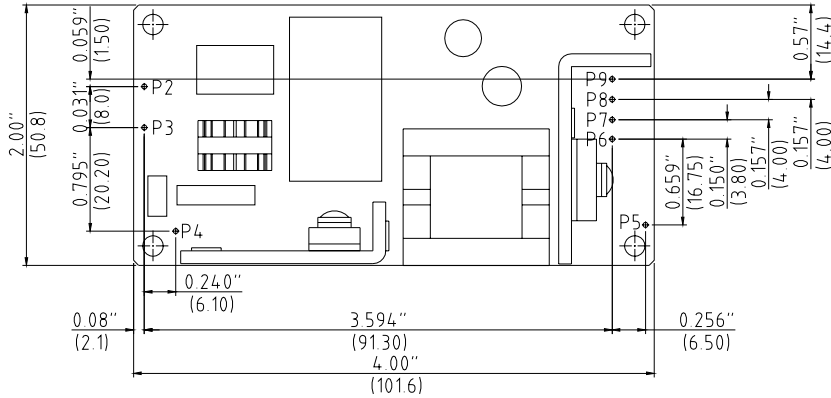
1. All dimensions in inches (mm).
2. Tolerance .XX=±0.04", .XXX=±0.010"



UP0601C-( ) ( )

# UMEC International Corporation

UP0601C-XXC1(PCB Mounted type)



PCB layout recommend

**NOTES:**

1. All dimensions in inches (mm)
2. Tolerance .XX= $\pm 0.04$ ", .XXX= $\pm 0.010$ "

| PIN Assignment |             |       |       |       |       |       |       |       |       |       |
|----------------|-------------|-------|-------|-------|-------|-------|-------|-------|-------|-------|
| UP0601C        |             |       |       |       |       |       |       |       |       |       |
| Pin            | Description | -03C1 | -05C1 | -09C1 | -12C1 | -15C1 | -18C1 | -24C1 | -29C1 | -48C1 |
| P4, P5         | FG          | ✓     | ✓     | ✓     | ✓     | ✓     | ✓     | ✓     | ✓     | ✓     |
| P2             | L           | ✓     | ✓     | ✓     | ✓     | ✓     | ✓     | ✓     | ✓     | ✓     |
| P3             | N           | ✓     | ✓     | ✓     | ✓     | ✓     | ✓     | ✓     | ✓     | ✓     |
| P6             | Common      | ✓     | ✓     | ✓     | ✓     | ✓     | ✓     | ✓     | ✓     | ✓     |
| P7             | Common      | ✓     | ✓     | ✓     | ✓     | -     | -     | -     | -     | -     |
| P8             | Vo          | ✓     | ✓     | ✓     | ✓     | ✓     | ✓     | ✓     | ✓     | ✓     |
| P9             | Vo          | ✓     | ✓     | ✓     | ✓     | -     | -     | -     | -     | -     |



UP0601C(-)(X)

**SMX POWER**

3005 Avenida Simi, Simi Valley, CA 93063  
 TEL: (805) 582-2804 FAX: (805) 582-2308  
<http://www.smxpower.com>