

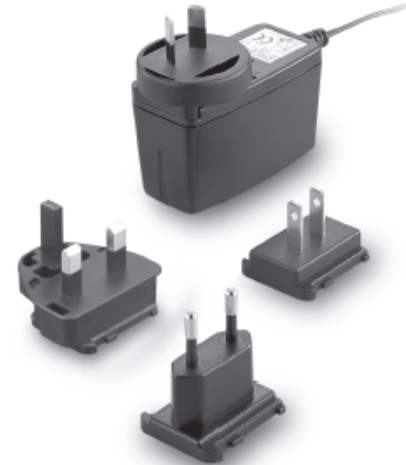


TRG10R SERIES 10W SWITCHING ADAPTER



Features

- * Universal Input: 90~264Vac
 - * Interchangeable AC Plugs
 - * Meets EN55022 Class "B" and CISPR/FCC Class B
 - * Continuous Short Circuit Protection
 - * Over Voltage Protection
 - * Meet CoC Tier 2 & DoE Level VI
- (Output cable length \leq 1800mm)
- * No Load Power Consumption < 75mW



Ordering information

TRG10RXXX - XX E XX
 Model No. DC Plug Type OVP DC Cable Length and Type
 01: 720mm
 02: 1220mm
 03: 1800mm
 11: 720mm with Ferrite Core
 12: 1220mm with Ferrite Core
 13: 1800mm with Ferrite Core
 * 18AWG / UL1185

MODEL	OUTPUT VOLTAGE	OUTPUT CURRENT	RIPPLE & NOISE NOTE 1	VOLTAGE ACCURACY NOTE 2	LINE REGULATION NOTE 3	LOAD REGULATION NOTE 4	AVERAGE EFFICIENCY min. NOTE 5
TRG10R050	5V	1.6A	50mVp-p	±2%	±1%	±4%	77.37%
TRG10R059	5.9V	1.5A	1%	±2%	±1%	±3%	78.12%
TRG10R060	6V	1.5A	1%	±2%	±1%	±3%	81.57%
TRG10R075	7.5V	1.2A	1%	±2%	±1%	±3%	81.57%
TRG10R090	9V	1.1A	1%	±2%	±1%	±2%	82.14%
TRG10R120	12V	0.85A	1%	±2%	±1%	±2%	82.32%
TRG10R136	13.6V	0.75A	1%	±2%	±1%	±2%	82.32%
TRG10R150	15V	0.7A	1%	±2%	±1%	±2%	82.49%
TRG10R180	18V	0.55A	1%	±2%	±1%	±2%	82.14%
TRG10R240	24V	0.4A	1%	±2%	±1%	±2%	81.96%



3005 Avenida Simi, Simi Valley, CA 93063
 TEL: (805) 582-2804 FAX: (805) 582-2308
<http://www.smxpower.com>

Specifications

INPUT SPECIFICATIONS:

Voltage 90~264Vac
 Frequency 47 to 63Hz
 Input Current 0.4A max.
 Inrush Current Cold Start @25°C 40A max. @ 240Vac
 Leakage Current 0.25mA max

OUTPUT SPECIFICATIONS:

Holdup Time 10mS typ. @115Vac
 Short Circuit Protection Continuous(Auto Recovery)
 Over Voltage Protection TVS Component to Clamp
 Temperature Coefficient ±0.05%/□

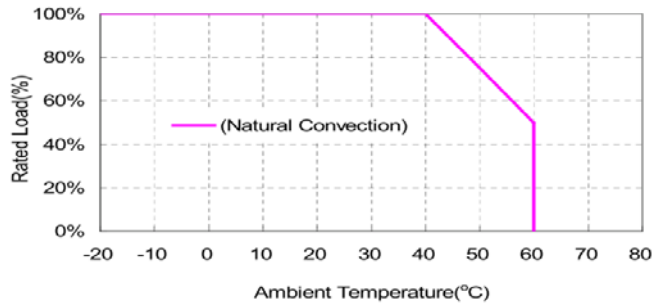
GENERAL SPECIFICATIONS:

Isolation Input to output = 4,242VDC
 Operating Temperature -20 ~ 60°C(see Derating Curve)
 Storage Temperature -20~85°C
 Humidity 93% RH max. Non condensing
 Cooling Natural Convection
 Switching Frequency 67KHz typ.
 MTBF MIL-HDBK-217F, GB, 25°C/115VAC 200K hrs min.
 Altitude 2000m
 Dimensions 2.858x1.823x1.402Inches (72.6x46.3x35.6mm)
 Weight 130g(0.29 Pounds)

SAFETY AND EMC:

Emission and Immunity EN55022 Class B, FCC Part 15 Class B
 EN61000-6-3, EN61000-3-2, EN61000-3-3
 EN55024, EN61204-3, EN61000-6-1
 Safety Class II, IEC60950-1, EN60950-1, UL60950-1

TRG10R Series Derating Curve

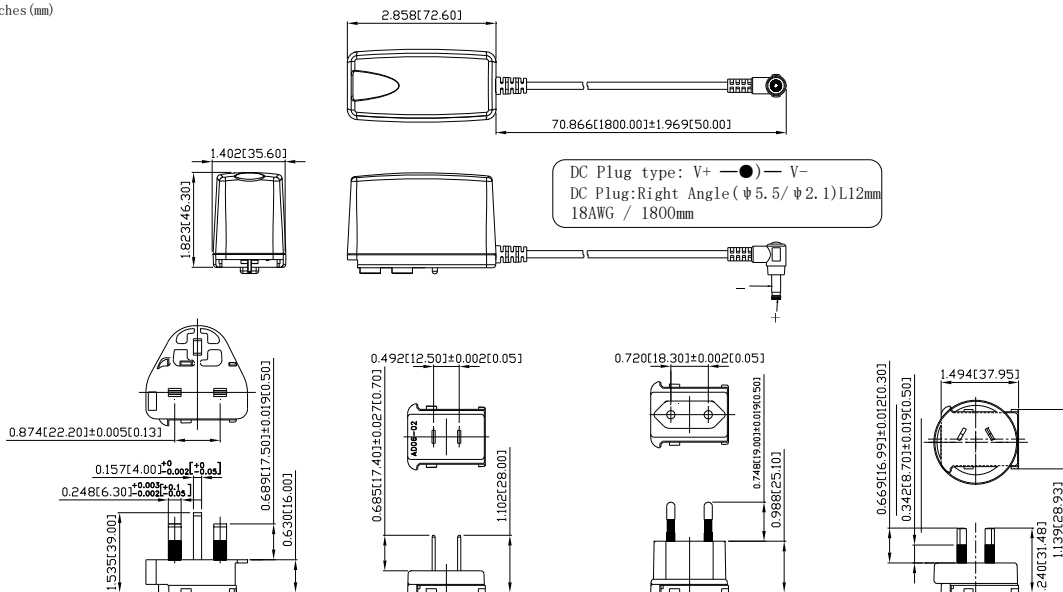


NOTE:

1. Add a 0.1uF ceramic capacitor and a 10uF E.L. capacitor to output for Ripple & Noise measuring @20MHz BW.
2. Voltage setpoint at 60% full load.
3. Line regulation measured from 100Vac to 240Vac full load.
4. Load regulation measured from 60% to full load and from 60% to 20% load (60% +/- 40% load).
5. Average Efficiency measured at 25%,50%,75%,100% load and input voltage is 115Vac / 230Vac.

Mechanical Specification

All Dimensions are in inches(mm)
 Tolerance:Inches:X.XXX±.02
 Millimeters:X.XX±.5
 UNIT: inches (mm)



Typical at 25°C, nominal line and 75% load, unless otherwise Specified