

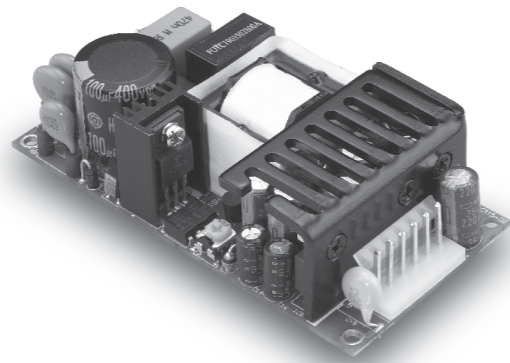
CFM40D/T

S E R I E S

**40W DUAL/TRIPLE OUTPUTS
AC-DC OPEN FRAME**

SMX POWER

3005 Avenida Simi, Simi Valley, CA 93063
TEL: (805) 582-2804 FAX: (805) 582-2308
<http://www.smxpower.com>



Features

- Universal Input Range 90-264VAC
- 2" x 4" Size
- Industry Standard Pin Out
- Efficiency to 81%
- Meets EN61204-3 Class B and CISPR/FCC Class B, Conducted
- Short Circuit Protection and Over Load Protection

| MODEL | Output Voltage | Output Current (A) | | | Ripple (mVp-p) | Voltage Accuracy | Line Reg. | Load Reg. | O/P Power Max. | %EFF. |
|-----------|----------------|--------------------|-------|------|----------------|------------------|-----------|-----------|----------------|-------|
| | | Min. | Rated | Max. | | | | | | |
| CFM40D-01 | 5V(V1) | 0.4 | 3.2 | 5.0 | 50 | ±3% | ±1% | ±3% | 40.0W | 80% |
| | 12V(V2) | 0.2 | 2.0 | 2.5 | 120 | ±4% | ±2% | ±5% | | |
| CFM40D-02 | 5V(V1) | 0.4 | 3.2 | 5.0 | 50 | ±3% | ±1% | ±3% | 40.0W | 81% |
| | 24V(V2) | 0.2 | 1.0 | 1.5 | 240 | ±4% | ±2% | ±5% | | |
| CFM40T-01 | 5V(V1) | 0.4 | 3.0 | 5.0 | 50 | ±3% | ±1% | ±3% | 40.5W | 78% |
| | 12V(V2) | 0.2 | 2.0 | 2.5 | 120 | ±4% | ±2% | ±5% | | |
| | -5V(V3) | 0 | 0.3 | 0.5 | 50 | ±3% | ±1% | ±1% | | |
| CFM40T-02 | 5V(V1) | 0.4 | 3.0 | 5.0 | 50 | ±3% | ±1% | ±3% | 42.6W | 78% |
| | 12V(V2) | 0.2 | 2.0 | 2.5 | 120 | ±4% | ±2% | ±5% | | |
| | -12V(V3) | 0 | 0.3 | 0.5 | 120 | ±3% | ±1% | ±1% | | |
| CFM40T-03 | 5V(V1) | 0.4 | 3.0 | 5.0 | 50 | ±3% | ±1% | ±3% | 42.0W | 78% |
| | 15V(V2) | 0.2 | 1.5 | 2.3 | 150 | ±4% | ±2% | ±5% | | |
| | -15V(V3) | 0 | 0.3 | 0.5 | 150 | ±3% | ±1% | ±1% | | |
| CFM40T-04 | 5V(V1) | 0.4 | 3.0 | 5.0 | 50 | ±3% | ±1% | ±3% | 42.6W | 78% |
| | 24V(V2) | 0.2 | 1.0 | 1.5 | 240 | ±4% | ±2% | ±5% | | |
| | -12V(V3) | 0 | 0.3 | 0.5 | 120 | ±3% | ±1% | ±1% | | |
| CFM40T-05 | 5V(V1) | 0.4 | 3.0 | 5.0 | 50 | ±3% | ±1% | ±3% | 40.5W | 78% |
| | 24V(V2) | 0.2 | 1.0 | 1.5 | 240 | ±4% | ±2% | ±5% | | |
| | -5V(V3) | 0 | 0.3 | 0.5 | 50 | ±3% | ±1% | ±1% | | |
| CFM40T-06 | 5V(V1) | 0.4 | 3.0 | 5.0 | 50 | ±3% | ±1% | ±3% | 42.6W | 78% |
| | 24V(V2) | 0.2 | 1.0 | 1.5 | 240 | ±4% | ±2% | ±5% | | |
| | 12V(V3) | 0 | 0.3 | 0.5 | 120 | ±3% | ±1% | ±1% | | |
| CFM40T-07 | 3.3V(V1) | 0.4 | 5.0 | 7.0 | 100 | ±3% | ±1% | ±3% | 30.0W | 71% |
| | 5V(V2) | 0.2 | 2.0 | 3.5 | 100 | ±4% | ±3% | ±5% | | |
| | -12V(V3) | 0 | 0.3 | 0.5 | 120 | ±3% | ±1% | ±1% | | |

Specifications

INPUT SPECIFICATIONS:

Voltage90 ~ 264Vac
Frequency47 to 63Hz
Inrush Current.....60A max. @240Vac
Input Current.....1A max. (RMS) @ 115Vac
Conducted EMI.....CISPR/FCC Class B
IsolationInput to output =4,242VDC
Leakage Current.....3.5mA max

OUTPUT SPECIFICATIONS:

Rated Power for Convection Cooling.....40W (CFM40T-07, 30W)
Maximum Power with 30 CFM Forced Air.....50W (CFM40T-07, 40W)
Hold-up Time.....20ms typ. @115Vac
Short Circuit/ Over Load Protection.....On All Outputs (Auto Recovery)
Over Voltage Protection.....3.6~4.6V/5.7~6.7V ON V1(3.3V/5V)
120%~140% ON V2(12V/15V/24V)

ENVIRONMENTAL CHARACTERISTICS:

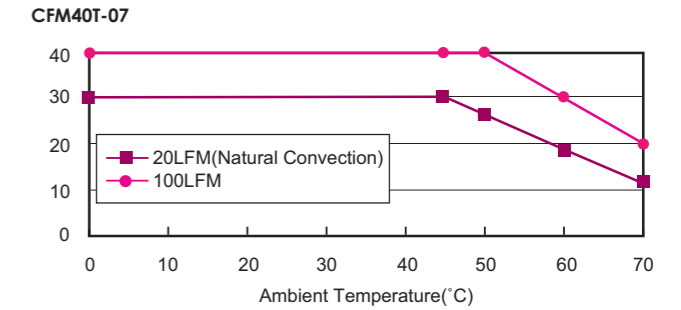
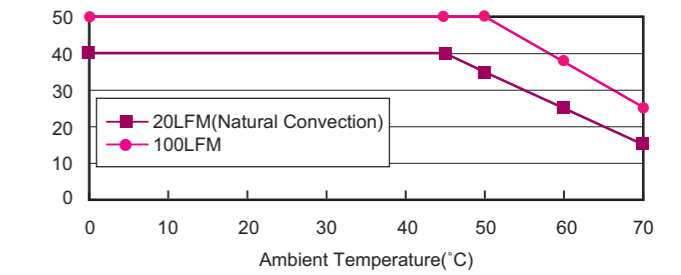
Operating Temperature0 ~ 45°C
Storage Temperature-20 ~ 85°C
Cooling.....Natural Convection

MECHANICAL CHARACTERISTICS:

Dimensions101.60 x 50.80 x 27.00mm(4.000 x 2.000 x 1.063Inches)
Weight180g (0.40Pounds)

CFM40D/T Series Derating Curve

CFM40D-01, 40D-02, 40T-01, 40T-02, 40T-03, 40T-04, 40T-05, 40T-06



PIN CONNECTION

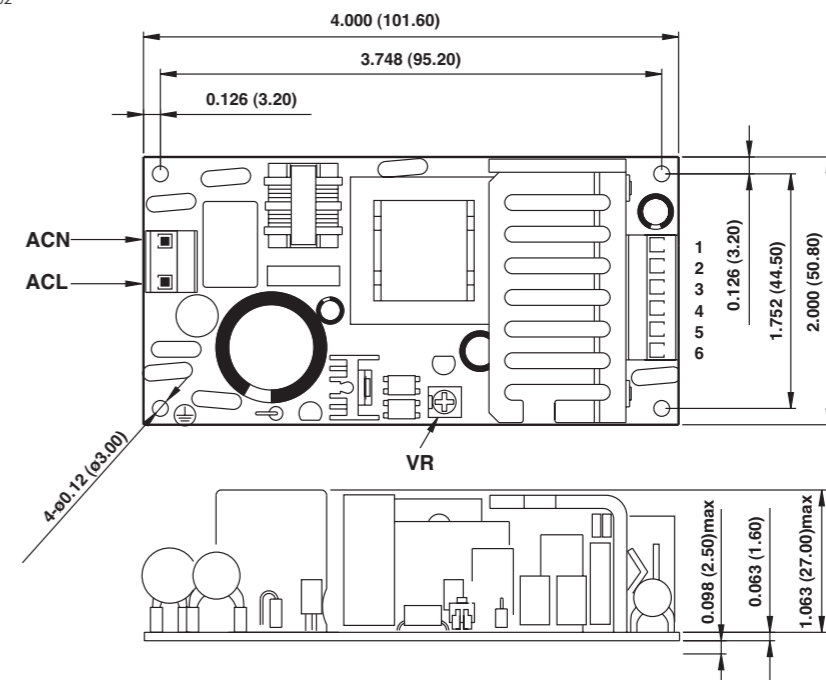
| Pin | CFM40D/T |
|-----|----------|
| 1 | V2 |
| 2 | V1 |
| 3 | V1 |
| 4 | COM |
| 5 | COM |
| 6 | V3 |

NOTE:

1. Voltage accuracy is set at full load.
2. Add a 0.1µF ceramic capacitor and a 10µF E.L. capacitor to output for Ripple & Noise measuring @20MHz BW.
3. Line regulation is measured from 100Vac to 240Vac with full load.
4. Load regulation is measured from 60% to 100% full load and from 60% to 20% full load (60% ± 40% full load)

CFM40D/T Watt Series

All Dimensions In Inches(mm)
Tolerance Inches: x.xxx= ±0.02
Millimeters: x.xx= ±0.5



Typical at 25°C, nominal line and 75% load, unless otherwise Specified

CFM40D/T