

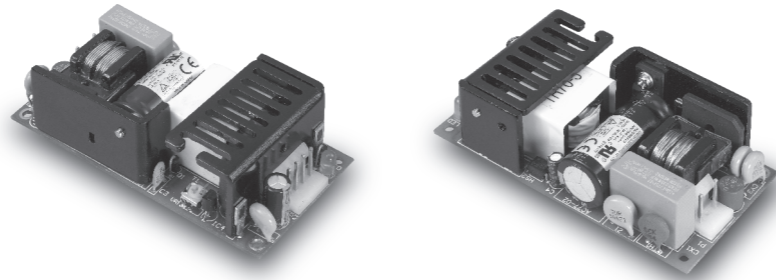
# CFM40/60

S E R I E S

## 40/60 WATT OPEN FRAME AC-DC MODULES

### SMX POWER

3005 Avenida Simi, Simi Valley, CA 93063  
 TEL: (805) 582-2804 FAX: (805) 582-2308  
<http://www.smxpower.com>



### Features

- Universal Input Range 90-264VAC
- Efficiency to 87%
- 2" x 4" Size
- Meets EN55022 Class B and CISPR/FCC Class B, Conducted
- Industry Standard Pin Out
- Continuous Short Circuit Protection

### CFM40 Series

MODEL	OUTPUT VOLTAGE	MAX. LOAD	MIN. LOAD	RIPPLE & NOISE	VOLTAGE ACCURACY	LINE REGULATION	LOAD REGULATION	%EFF
CFM40S033	3.3 V	6A	0A	50mV	± 1%	± 0.5%	± 1%	70% Typ.
CFM40S050	5 V	6A	0A	1%	± 1%	± 0.5%	± 1%	76% Typ.
CFM40S090	9 V	4.45A	0A	1%	± 1%	± 0.5%	± 1%	84% Typ.
CFM40S120	12 V	3.34A	0A	1%	± 1%	± 0.5%	± 1%	85% Typ.
CFM40S150	15 V	2.67A	0A	1%	± 1%	± 0.5%	± 1%	85% Typ.
CFM40S240	24 V	1.67A	0A	1%	± 1%	± 0.5%	± 1%	85% Typ.
CFM40S300	30 V	1.33A	0A	1%	± 1%	± 0.5%	± 1%	86% Typ.
CFM40S360	36 V	1.11A	0A	1%	± 1%	± 0.5%	± 1%	87% Typ.
CFM40S480	48 V	0.834A	0A	1%	± 1%	± 0.5%	± 1%	87% Typ.

### CFM60 Series

MODEL	OUTPUT VOLTAGE	MAX. LOAD	MIN. LOAD	RIPPLE & NOISE	VOLTAGE ACCURACY	LINE REGULATION	LOAD REGULATION	%EFF
CFM60S033	3.3 V	8A	0A	50mV	± 1%	± 0.5%	± 1%	72% Typ.
CFM60S050	5 V	8A	0A	1%	± 1%	± 0.5%	± 1%	77% Typ.
CFM60S090	9 V	6.67A	0A	1%	± 1%	± 0.5%	± 1%	84% Typ.
CFM60S120	12 V	5A	0A	1%	± 1%	± 0.5%	± 1%	85% Typ.
CFM60S150	15 V	4A	0A	1%	± 1%	± 0.5%	± 1%	86% Typ.
CFM60S240	24 V	2.5A	0A	1%	± 1%	± 0.5%	± 1%	86% Typ.
CFM60S300	30 V	2A	0A	1%	± 1%	± 0.5%	± 1%	86% Typ.
CFM60S360	36 V	1.67A	0A	1%	± 1%	± 0.5%	± 1%	88% Typ.
CFM60S480	48 V	1.25A	0A	1%	± 1%	± 0.5%	± 1%	88% Typ.

### Specifications

#### INPUT SPECIFICATIONS:

Voltage .....90 ~ 264Vac  
 Frequency .....47 to 63Hz  
 Inrush Current.....50A max. @ 240Vac  
 Conducted EMI.....CISPR/FCC Class B  
 Isolation .....Input to output =4,242VDC  
 Leakage Current.....3.5mA max

#### OUTPUT SPECIFICATIONS:

Holdup Time .....8mS typ. @ 115Vac  
 Short Circuit Protection .....Continuous  
 Temperature Coefficient .....±0.05% / °C

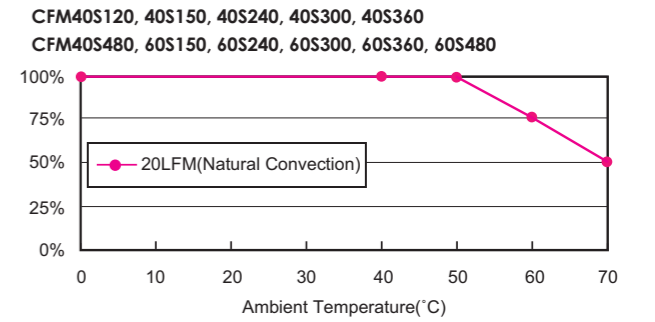
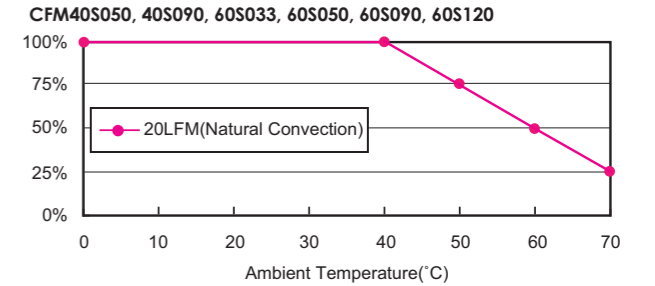
#### ENVIRONMENTAL CHARACTERISTICS:

Operating Temperature .....0°C ~ 50°C  
 Storage Temperature .....-20°C ~ 85°C  
 Cooling.....Natural Convection

#### MECHANICAL CHARACTERISTICS:

Dimensions .....101.60 x 50.80 x 30.48mm(4.000 x 2.000 x 1.200Inches)  
 Weight .....CFM40: 170g (0.38 Pounds)  
 CFM60: 175g (0.39 Pounds)

### CFM40/60 Series Derating Curve

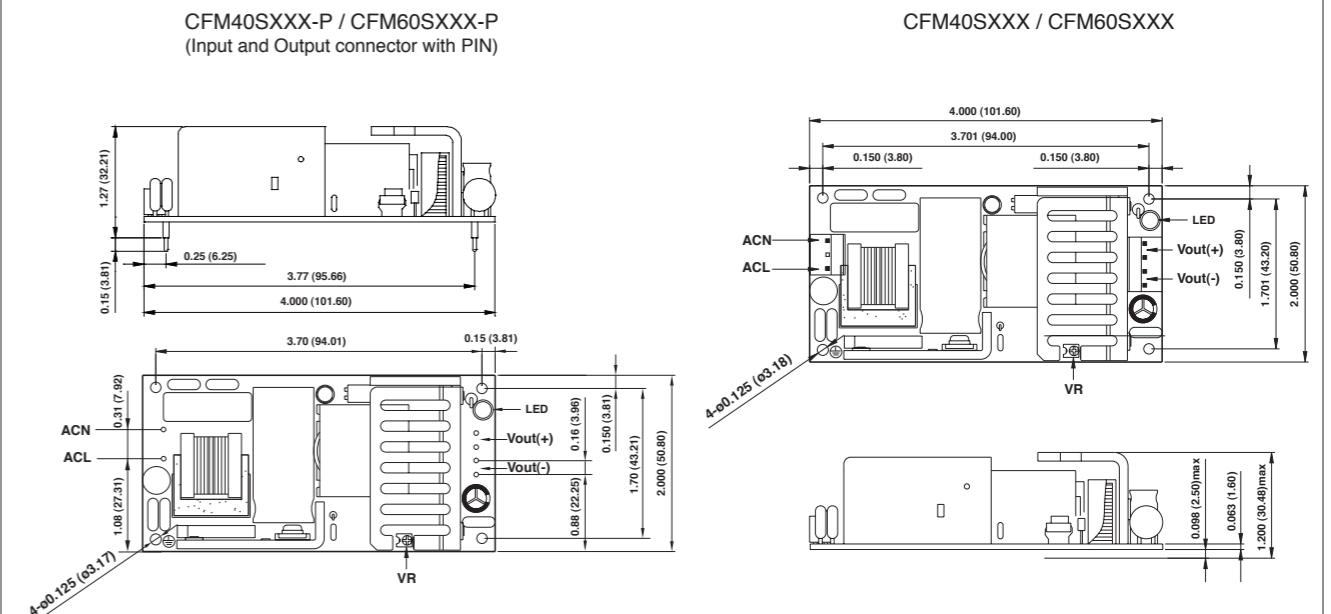


#### NOTE:

1. Add a 0.1µF ceramic capacitor and a 10µF E.L. capacitor to output for Ripple & Noise measuring @20MHz BW.
2. Line regulation is measured from High Line to Low Line with full load.
3. Load regulation is measured from Full to 10% load.
4. Input connector mates with Molex housing 09-50-3031 and Molex 2878 series crimp terminal.
5. Output connector mates with Molex housing 09-50-3041 and Molex 2878 series crimp terminal.

### CFM40/60 Series

All Dimensions In Inches(mm)  
 Tolerance Inches: xxx= ±0.02  
 Millimeters: x.xx= ±0.5



Typical at 25°C, nominal line and 75% load, unless otherwise Specified